

NAME: _____

Introduction to Anthropology

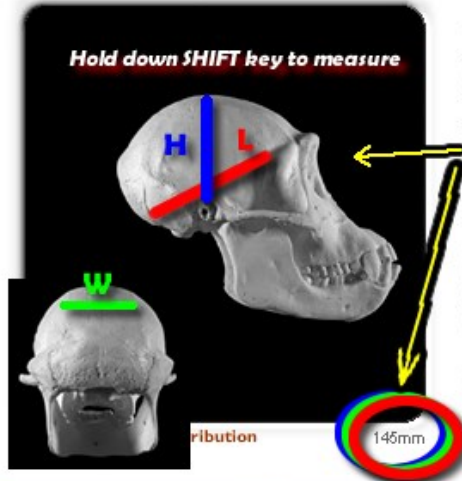
Online Activity 2

Use the "Gallery" at <http://www.anth.ucsb.edu/projects/human/>

(you may need to install the *Shockwave Player*)

Chimpanzee

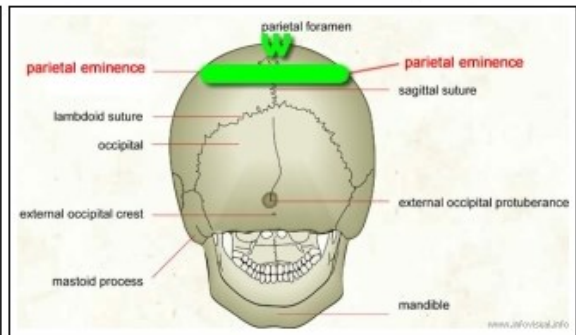
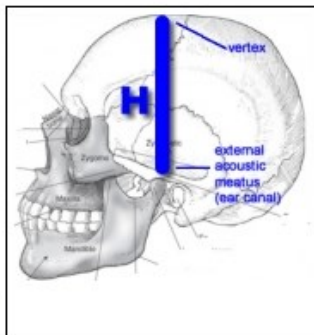
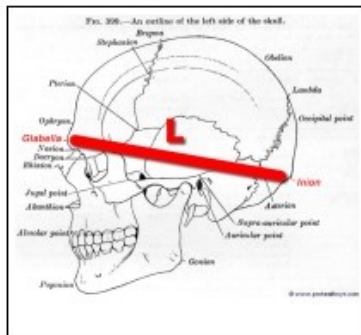
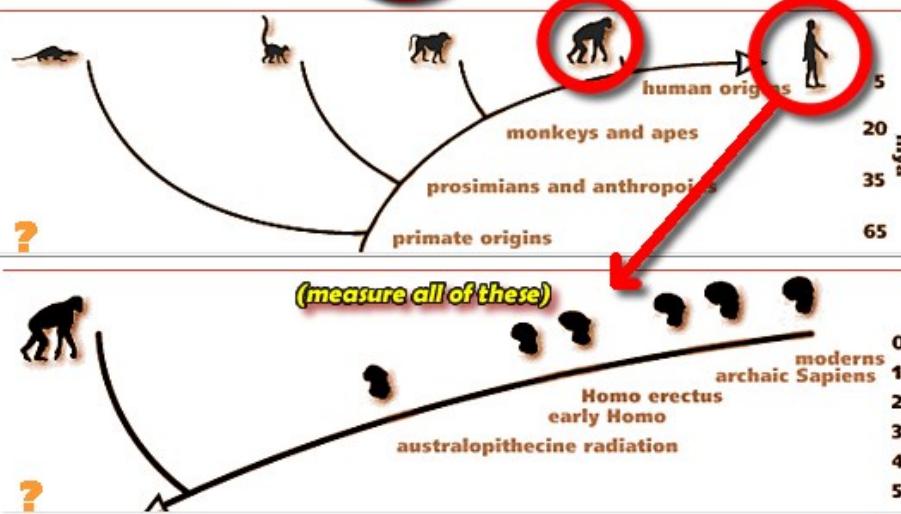
Hold down **SHIFT** key to measure



Your job is to use our virtual lab to measure each skull in the human ancestral clade.

Click where indicated below to access the skulls. You can use your mouse to click and drag on the skull to see it from 360 degrees. Then hold the SHIFT key down to measure the **L**ength, **H**eight, and **W**idth of each skull. Use the images to the left and below as a guide. Record these numbers.

To calculate cranial volume (cc), divide each number by 10 (to convert millimeters to centimeters), then multiply the three figures together. Record these numbers in your research notes, which you will return to the P.I. (principal investigator) of your lab (Professor Reymers). Be sure to include a report on what conclusions you can draw from comparison and contrast of your data.



SPECIES	LENGTH	HEIGHT	WIDTH	mc = L x H x W	cc = LxHxW / 10
<i>Pan troglodytes</i>					
<i>Australopithecines</i>					
<i>Homo habilis</i>					
<i>Homo erectus</i>					
<i>Archaic Homo sapiens</i>					
<i>Homo Neandertalensis</i>					
<i>Modern Homo sapiens</i>					

Use this table to record your results.