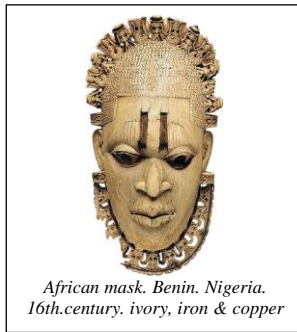


# Syllabus, Fall 2024

## ANTH 101

### Introduction to Anthropology

Professor Kurt Reymers, Ph.D.



 **Brightspace Website Required**  
[brightspace.morrisville.edu](https://brightspace.morrisville.edu)



**Professor Kurt Reymers, Ph.D.**  
**Office Location:** 205 Crawford Hall  
**Walk-In Office Hours:** Mon/Weds: 1pm-2pm  
Tues/Thurs: 10am-11am  
Fri: No office hour  
**e-mail:** [reymers@morrisville.edu](mailto:reymers@morrisville.edu)  
**website:** <https://sociology.morrisville.edu>

### Course Description:

An introduction to the study of human beings, ranging across the four fields of biological and cultural anthropology, archaeology, and linguistics. Focus is placed on human evolution and origins, development of human culture, and description and comparison of differing ways of life around the world. Emphasis on basic anthropological concepts of evolution, culture, discovery, institutions, globalization, indigeneity, and socio-historical change. *3 credits, fall or spring semester. These credits will satisfy the SUNY General Education requirements for "World History and Global Awareness" and satisfies any local Liberal Arts requirement.*

### Course Outcomes:

Anthropology is the study of human beings which employs unique methods and a holistic perspective. The chief goal of this class is to pass on the rudiments of the four fields of anthropology: cultural anthropology, physical/biological anthropology, archaeology, and linguistics. Using worldwide examples, the course will emphasize human biological and cultural origins and diversity. The expected outcomes of the course include:

- identifying scientific theory and methodology and how it is applied in anthropological investigation;
- demonstrating an understanding of the contribution of each of the four fields of anthropology to understanding human origins and culture;
- demonstrating understanding of what is universal among and what is particular about human beings (both biologically and culturally);
- comparing and contrasting anthropological perspectives of cultural relativism and universality;
- developing the ability to analyze competing theories of human origins and culture.

Reading on your own, participating online, taking notes, and completing all assignments on time should allow you to successfully gain knowledge about anthropology and obtain the specific course outcomes.

### Required Texts and Materials:



**Lavenda, Robert & Emily Schulz. 2018. Anthropology: What Does It Mean To Be Human, 4<sup>th</sup> ed.**

Oxford University Press: NY.

*Reading roughly one chapter a week will enhance your understanding of the topics of each weekly session.*



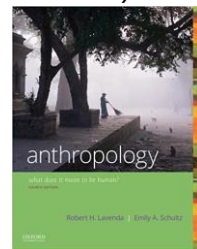
**Online media.** Available on the course Brightspace site.

*These videos, podcasts and readings can be found on the course Brightspace site and their consumption is required to supplement weekly topics.*



**A coursework notebook.**

*While you read, watch, or listen to your assignments, you should take notes on the most interesting and meaningful aspects of what you read. This will help you recall information when you need to answer questions on assignments, quizzes and exams.*



## Grades:

### **Attendance and Participation (10% of final grade)**

You are allowed *two absences* available to you without penalty, but unused absences are credited toward your participation. See the *Class Policies* section for more information regarding attendance. Participation may involve voluntary and involuntary contributions in class, attending tutoring sessions, seeing me during my office hours to discuss the course, or other behaviors indicating your involvement in the course.

### **Plickers Quizzes (20% of final grade)**

You will be required to complete in-class quizzes during the time of this course. The quizzes will be administered to preassigned groups in class using *Plickers* smart-phone technology (explained in class). Group quizzes can be made up within one week after the class if you are not in attendance – a 5% penalty will be taken off the average quiz grade for each missed quiz.

### **Online Media Weekly Assignment (20% of final grade)**

Each week, a reading, listening, or video activity will be put on the course Brightspace site and you must send your answers to questions about these activities directly to the professor by email. These activities will relate to readings that enhance the topics from the textbook and/or other readings assigned in class and available through the course Brightspace site. Online media will be posted weekly and are due on Sunday by midnight. They can be submitted up to 5 weeks after the due date for ½ credit. One missing online activity grade can be dropped at the end of the semester.

### **Research Assignment (20% of final grade)**

A written report on an area of anthropological research will be assigned during the semester. The assignment is designed to enhance research skills and show your understanding of the themes of evolution and culture that we are covering in the course. Instructions, a rubric, and formatting/submission details will be given in class.

### **Exams (30% of final grade)**

Three exams will be given during the course, including a final exam - study weekly with the schedule provided, use the review notes and web materials, and be prepared to get the most out of this large proportion of your grade. Exams will be rigorously timed and will be significantly longer and more complex than the weekly quizzes. Be sure to study ahead of time as you will not be given time to look up every answer in your book.

#### **Grade Distribution:**

**10% of grade: (2x/week) Attendance and Participation**

**20% of grade: (10+) Plickers Quizzes (in class, Wednesdays)**

**20% of grade: (10+) Online Media Weekly Assignment**

**20% of grade: (1) Research Assignment**

**30% of grade: (3) Exams (10% each exam)**

**Grade Converter:** (use for any assignment/exam/grade in my classes)

Percent / Letter / Grade Point Converter:

93 to 100+ = **A** = 4.0

83 to 86 = **B** = 3.0

73 to 76 = **C** = 2.0

60 to 67 = **D** = 1.0

90 to 92 = **A-** = 3.67

80 to 82 = **B-** = 2.67

70 to 72 = **C-** = 1.67

59 and below = **F** = 0.0

87 to 89 = **B+** = 3.33

77 to 79 = **C+** = 2.33

68 to 69 = **D+** = 1.33

#### **Asking about grades:**

**DO NOT USE BRIGHTSPACE'S GRADE BOOK.** All your grades for this course will be available on a home-brewed webpage, by clicking the link on the Brightspace left menu and signing in with a password I will get from you early in the semester. Please refer to this page before emailing me with questions about specific grades on assignments and exams.

## **Late, Make-up Assignment, and Extra Credit Policies**

**Exams:** Make-up exams will not be given, unless you arrange with me within one-week of the exam to make it up.

Please make every effort to **make the exam up within one-week**. If you miss an exam without making such arrangements you will most likely receive NO CREDIT for that particular exam.

**Plickers Quizzes:** Plickers quizzes **can be made up during my walk-in office hours** or by appointment (see above) within one week after the quiz is given in class.

**Online Media:** Online media activities submitted after the due date will receive half-credit if turned in within five weeks of it being assigned. Inability to access the Brightspace site to complete the activity is NOT a valid excuse for missing an assignment. Be prepared to complete the activity prior to the due date.

**Research Report:** A research report will be due as scheduled but may be turned in after the due date with a penalty of ONE LETTER GRADE (or 10 points on a 100-point scale) for each week it is late (unless otherwise indicated by the professor in the assignment). No reports more than 5 weeks late will be given credit.

**Extra credit:** I **do not give extra credit assignments to individuals** – any extra credit will be on a class-wide basis (and there is no guarantee of ANY extra credit assignments in any given semester).

**Golden Points:** See the **Brightspace Site** and **Grades Page** for more information about how to accumulate extra points.

## **Class Policies**

- **Attendance:** Students should make every attempt to attend all classes. **Missing any more than two classes** may impede your progress **and result in a lower grade. Attendance is taken daily and recorded.** The absences allowed are for athletic events, serious and contagious illness or injury (for COVID-19 related illness, see the more detailed policy below), family emergencies, snow days, car accidents, etc. There are **no “excused” or “unexcused” absences**. It is expected that the absences allowed will satisfactorily cover the cases where absence is necessary. If they do not, please meet with the instructor during his office hours to explain your case. If you have too many absences and would like to have your case considered, please provide documentation of the reason for your absence, including date, evidence and explanation of the absence, *in writing* (**not** by e-mail or verbal agreement). As an incentive for good attendance, for each of the absences you are allowed that go unused, you will earn an extra bonus point toward the final grade. An additional bonus is given if you are present at the class sessions immediately before and after the mid-semester break(s).
- **Classroom Norms:** Norms are the product of culture; they happen when people get together in groups and decide on mutually agreeable behavior and expectations. Let’s create the classroom norms together as the course proceeds. They should be attuned and appropriate to meeting the course outcomes. I will be asking you throughout the semester not only about what you think the norms of the classroom should be, but also how to enforce them.
- **Tardiness Policy:** Arriving late disrupts the class, as does leaving early. Showing up LATE to class (after I have taken the attendance for the day, which I do on the classroom view screen) will earn you an L (late) in the gradebook. Every three instances of tardiness will result in one absence marked on the attendance sheet. People showing up VERY LATE (15 minutes or more) or leaving the classroom during class (with the exception of *emergencies or prearranged circumstances only*) will be marked as absent for the day. Note, it is your responsibility to notify me if you come in late, otherwise you may be marked absent.
- **Weather Policy:** In the event of inclement weather, please pay attention to the college’s Class Cancellations webpage to see if the class is cancelled. If class is cancelled due to weather, or for other reasons, see the course Brightspace site immediately for instructions on assignments, due dates, or other important and timely information.
- **Academic Honesty and the Plagiarism Policy:** Academic honesty promotes continued academic and occupational success. Maintenance of academic honesty and quality education is the responsibility of both faculty and students. Any written assignment (including all electronic media) submitted by a student must be *original authorship*. Representation of another’s work as his or her own shall constitute plagiarism. See the student handbook for more.

Plagiarism means theft of intellectual property, obtained from a print or electronic medium. A person has plagiarized if s/he quotes three or more words in sequence from a source and (1) doesn't use quotation marks ("The quick brown fox..."), or (2) doesn't identify the source (what is known as "citation"). A person has also plagiarized if s/he records or cites ideas, information, or other material from a source that is not identified, or if the individual paraphrases information from a source that is not acknowledged. The penalty for plagiarism could be failure on the assignment, failure in the course, or even expulsion from the college. *Ignorance of these rules is not an excuse for plagiarism.*

- **IMPORTANT RULES ABOUT COPYING and AI:** In an online setting, it's tempting to "work together" with one or more other students to answer questions and complete assignments and exams. Please know that I have a keen eye and memory, and I have comparison software that can scan your assignment and compare the wording to other students'. IF THERE IS AN EXACT MATCH, BOTH/ALL STUDENTS INVOLVED WILL FAIL THE ASSIGNMENT (in the case of a first infraction; see plagiarism consequences, above). In the case of exams and quizzes, if answers to all questions match exactly or statistically too close to another student(s), both/all students involved will face a penalty. For my AI policy, see the Brightspace page; generally, the same rules apply as above (exact copies from AI, as established by AI checkers, will be penalized, but using AI for ideas and grammar (such as Grammarly) is generally okay.

## ***Office of Accessibility Services***

SUNY Morrisville is committed to ensuring the full participation of all students in its programs. If you have a documented disability (or think you may have a disability) and, as a result, need a reasonable accommodation to participate in this class, complete course requirements, or benefit from the College's programs or services, contact the Office of Accessibility Services (OAS) as soon as possible. To receive any academic accommodation, you must be appropriately registered with OAS. The OAS works with students confidentially and does not disclose any disability-related information without their permission. If you wish to use their test accommodations for an exam please speak with me the class before each exam. Doing this will help me accommodate you. All tests must be completed the same day and time the test is scheduled. Any other arrangements must be made by agreement between the student and the instructor. For further information about services for students with disabilities, please contact the OAS. Please talk to me as soon as you can about your individual learning needs and how this course can best accommodate them. If you do not have a documented disability, remember that other support services, including the Tutoring Center, are available to all students.

## ***Starfish***

This course participates in the Starfish Early Alert System (accessible through Brightspace), an early intervention system designed to enable academic success, student persistence, and graduation. When an instructor observes student behaviors or concerns that may impede academic success, the instructor may raise an alert flag that 1) notifies the student of the concern, 2) requests an individual contact to discuss the issue, and 3) in most cases, refers the student to the academic advisor. If you receive an email notification of an early alert, it is your responsibility to contact the instructor as soon as possible to discuss the issue. The purpose of the contact is to determine the severity of the issue, accurately assess its potential impact on your academic success, and to plan actions to prevent negative consequences and enable academic success. For more information about harnessing your success, contact your academic advisor.

## ***Title IX***

Title IX of the Education Amendments of 1972 prohibits sex discrimination in education. It reads: "No person in the United States shall, on the basis of sex, be excluded from participation in, be denied the benefits of, or be subjected to discrimination under any education program or activity receiving federal financial assistance." These protections are not just for students; faculty and staff also are covered by the protections of Title IX. The types of activities that invoke Title IX protections include gender discrimination, domestic violence, dating violence, sexual harassment, sexual assault, and/or stalking. VAWA – Violence Against Women Act is a federal law first passed in 1994 most recently reauthorized in 2013. It outlines procedures for handling, investigating reports and has educational requirements for campuses. The Title IX coordinator for SUNY Morrisville can be reached at 315.684.6997.

**Introduction**

**Week 1. What is Anthropology?**

- Before Aug 26:** Purchase textbook & review syllabus/schedule
- Aug 26: CLASS** - read Lavenda textbook, [Chapter 1](#) pgs. 3-10
- Aug 27:** read Lavenda textbook, [Chapter 1](#) pgs. 11-20
- Aug 28: CLASS** - read Lavenda textbook, [Module 1](#), pgs. 21-29
- Aug 29:** Do Online Media #1 (Brightspace) *due Sunday midnight*

**I: Biological Anthropology**

**Week 2. Genetics and Evolution**

- Sept 2:** read Lavenda textbook, [Chapter 2](#), pgs. 31-45
- Sept 4:** read Lavenda textbook, [Chapter 2](#), pgs. 46-58
- Quiz on Wednesday (Chp 1 & 2)
- Online Media #2 (Brightspace) - *due by end of day Sunday*

**Week 3. Primatology and Early Origins of Man**

- Sept 9:** Lavenda textbook, [Chapter 3](#), pgs. 61-80
- Sept 11:** Lavenda textbook, [Module 2](#), pgs. 81-93
- Quiz on Wednesday
- Online Media #3 (Brightspace) - *due by end of day Sunday*

**Week 4. The Origins of Homo sapiens**

- Sept 16:** read textbook, Chapter 4, pgs. 96-123
- Sept 18:** read textbook, Chapter 4, pgs. 124-139
- Quiz on Wednesday
- Online Media #4 (Brightspace) - *due by end of day Sunday*

**Week 5. Review and Exam 1**

- Sept 23:** review textbook Chps 1, 2, 3, 4 and review sheet/notes
- Sept 25: Exam 1**

**Week 6. Variation in Homo sapiens**

- Sept 30:** read Lavenda textbook, Chapter 5, pgs. 143-152
- Oct 2:** read Lavenda textbook, Chapter 5, pgs. 153-167
- Quiz on Wednesday
- Online Media #5 (Brightspace) - *due by end of day Sunday*

**II. Archaeology and Linguistics**

**Week 8. How We Discover the Past**

- Oct 7:** read Lavenda textbook, Chapter 6, pgs. 169-179
- Oct 9:** read Lavenda textbook, Chapter 6, pgs. 179-189
- review Lavenda textbook, [Module 2](#), pgs. 81-93
- Quiz on Wednesday
- Online Media #6 (Brightspace) - *due by end of day Sunday*

**Fall Break 1: Oct. 14-15 – No Classes**

**Week 7: Half-Week—Archaeology, cont.**

- Oct 16:** read Lavenda textbook, Chapter 6, pgs. 190-198

**Very Important Dates!**

- Sept 25: Exam 1**                                      **Wednesdays: Group Quizzes**
- Nov 8: Exam 2**                                      **Sundays: Online Media Due**
- Nov 10: Research Report Due**
- December: Final Exam**

**Week 9. Domestication & The Rise of Civilization**

- Oct 21:** review Lavenda textbook, Chapter 7, pgs. 201-222
- Oct 23:** read Lavenda textbook, Chapter 7, pgs. 223-235
- Quiz on Wednesday
- Online Media #8 (Brightspace) - *due by end of day Sunday*

**Week 10: Human Culture and Cultural Change**

- Oct 28:** read Lavenda textbook, Chapter 8, pgs. 237-256
- Oct 30:** read Lavenda textbook, Module 3, pgs. 257-271
- Quiz on Wednesday
- Online Media #9 (Brightspace) - *due by end of day Sunday*

**Week 11: Report and Exam Week**

- Nov 4:** review textbook Chps 5, 6, 7, 8 and review sheet/notes
- Nov 6: Exam 2**
- Research Report due Sunday Nov 10**

**Week 12. Anthropological Linguistics and Culture**

- Nov 11:** read Lavenda textbook, Chapter 9, pgs. 273-288
- Nov 13:** read Lavenda textbook, Module 4, pgs. 289-301
- Quiz on Wednesday
- Online Media #10 (Brightspace) - *due by end of day Sunday*

**III. Ethnology**

**Week 13.1. Cultural Institutions: Family and Kinship**

- Nov 18:** read Lavenda textbook, Chapter 14, pgs. 421-441
- Nov 20:** read Lavenda textbook, Chapter 14, pgs. 441-467
- Quiz on Wednesday
- OPTIONAL Online Media #B1 (Brightspace) - *due by end of Sun.*

**Week 13.2. Half-Week: Cultural Anthropology**

- Nov 25:** No readings

**Fall Break 2: Nov. 27-29 – No Classes**

**Week 14. Cultural Institutions: Global Stratification—The 3 P’s**

- Dec 2:** read Lavenda textbook, Chapter 12, pgs. 363-384
- Dec 4:** read Lavenda textbook, Chapter 12, pgs. 385-391
- Quiz on Wednesday
- OPTIONAL Online Media #B2 (Brightspace) - *due by end of Sun.*

**Week 15. Week of Dec 9: Final Exam**

- Review ALL assigned Lavenda textbook readings and notes
- (see final exam review sheet)

**December 9: Final Exam**

- See Final Exam Schedule on college website/Brightspace