

# Course Syllabus - Spring 2024

## SOCI 270/370: Drugs, Society, and Behavior

Professor Kurt Reymers, Ph.D.



**Course Description:** Examines the use of psychoactive drugs. Explores human behavior, examining the interactions between chemicals and neurons to the psychological, behavioral, and physiological effects on the individual and the attendant impact on society. We will touch on topics relating to biology, pharmacology, neuroscience, chemistry, anthropology, history, law, sociology, and political science; the effects of psychoactive drug use on society will help us to understand the behavior of social and political groups and how they influence the individual.

*200-level prerequisite or co-requisite: PSYC 101 or SOCI 101, or permission of the professor; 300-level prerequisite: PSYC 101 or SOCI 101, or permission of the professor. 3 credits, spring semester. This course satisfies the Liberal Arts and Sciences requirement and the SUNY General Education Requirement for Social Science.*

**Professor Kurt Reymers, Ph.D.**

**Office Location:** 205 Crawford Hall

**Walk-in (Open) Office Hours:**

**Mon & Weds: 11am - 12pm;**

**Tues & Thurs: 10am - 11am**

**Fri: No office hour**

*or by appointment*

**e-mail:** [reymers@morrisville.edu](mailto:reymers@morrisville.edu)

### Course Outcomes:

The goal of this class is to examine the relationship between substances that affect the human body and the human institutions that organize society and create social rules, norms and expectations respecting these substances. The outcomes of the course for you, the student, will allow you to:

- define drugs and recognize the socio-political implications of such definitions;
- comprehend the psychopharmacological effects on the human nervous system;
- examine the relationship of drugs to social institutions from a sociological perspective;
- apply knowledge of American legal statutes and policies regarding drugs;
- analyze the impacts of the modern American political-legal institutions' stance on drugs;


Additional outcome *only* for SOCI 370 students:


- development of research and analysis skills in social science disciplines.

The course will examine the definition(s) of a drug, the biological and psychological patterns of behavior related to specific drugs, and the political, economic, and cultural institutions that are affected by drugs in American society as well as other countries, and in the international relations between countries related to drugs.

### Required Books and Resources:

You are responsible for purchasing the following resources (available at the Campus Store and online):

 **Hart, Carl L. and Charles Ksir. 2015. Drugs, Society & Human Behavior, 17<sup>th</sup> ed.**, McGraw-Hill Publishing. Available at the college bookstore or online bookseller. *Reading roughly one chapter a week will enhance your understanding of the topics of the weekly class sessions.*

 **Hart, Carl L. 2014. High Price: A Neuroscientist's Journey of Self-Discovery That Challenges Everything You Know About Drugs and Society.** HarperCollins Publishers. Available at the college bookstore or online bookseller. *Reading roughly one chapter a week will enhance your understanding of the relation between drugs, class, race, gender and society through the lived experience of the textbook author.*

 **Online media reading/video material.** Available on the Brightspace website.

*These readings, podcasts and videos will be posted weekly to the Brightspace website and will be required reading to supplement weekly topics.*



## Grades (All Students):

### Attendance and Participation (SOCI 270: 20% / SOCI 370: 10%)

You are allowed *two absences* available to you without penalty, but unused absences are credited toward your participation. I do not distinguish between “excused” or “unexcused” absences, but I do require an explanation of absences if special dispensation is expected. See the *Class Policies* section of this syllabus for more information regarding attendance. Participation may involve voluntary and involuntary contributions in class, attending tutoring sessions, seeing me during my office hours to discuss the course, or other behaviors indicating your involvement in the course. In the event I miss class, I will post instructions on the course website regarding readings and additional assignments to guide you in self-study.



### Bi-Weekly Journal (SOCI 270: 20% / SOCI 370: 20%)

The bi-weekly journal is a place to record your thoughts on the class readings, this semester involving the autobiography of neuroscientist Dr. Carl Hart (your textbook’s author), titled “High Price.” A prompt will be given on the Brightspace course webpage Bi-Weekly Journal tab, and you can respond with a written, audio, and/or video recorded response. The response should be of sufficient length to fully address the topic involved for that week. The assignment will be graded on a 0 (unsatisfactory), 1 (satisfactory), or 2 (excellent) point scale.

### Group Plickers Quizzes (SOCI 270: 20% / SOCI 370: 10%)



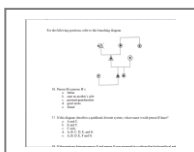
Several quizzes will be given, but you will not be alone! For these quizzes, you will be able to use your classmates in preassigned groups as resources in answering the questions. I will use the *Plickers* smartphone technology to conduct these quizzes. Quizzes cannot be made up more than one week after given in class. Quiz averages make up 20% of your final grade.

### Online Media Weekly Homework Assignments (SOCI 270: 20% / SOCI 370: 20%)

There will be activities posted to the website for you to complete throughout the semester (one every week). The assignments will involve a variety of activities, such as personal reflection, online research, reading comprehension, or watching videos regarding the week’s topic. Ten (10) of these assignments will be given (due at the end of each week) and should be done after reading the associated textbook chapter and asking any questions in class.



### Exams (SOCI 270: 20% / SOCI 370: 20%)



Two major exams (a midterm and a final) will be given during the course - study weekly with the schedule provided, use the review notes and web materials, and be prepared to get the most out of this portion of your grade. Unannounced quizzes may also be given throughout the semester. Unless otherwise specified, you are not allowed to use any books, notes or materials during the exams and quizzes. You will have the regular class period to complete exams.

**SOCI 370 only: Research Paper (20%)** The research paper is an additional evaluation of each student’s ability to create a thesis, research that thesis, and identify competency in performing literature review, synthesis of sources, and drawing conclusions. The research paper will be broken down into four steps, outlined on the Brightspace page for the course. Late research assignments will be penalized 10% of the grade for each week late (no more than five weeks).

### Grade Distribution

#### 270 / 370:

- 20% / 10% of grade: **Attendance and Participation** (recorded daily)
- 20% / 20% of grade: **A bi-weekly journal** (recorded weekly)
- 20% / 10% of grade: **Group Quizzes** (in-class *Plickers* quizzes)
- 20% / 20% of grade: **Online Media Homework** (weekly writing assignments)
- 20% / 20% of grade: **Exams** (midterm and final – 10% of final grade each)
- 0% / 20% of grade: **Research Paper** (four steps – 5% of final grade each)

#### 100% General Percent / Letter / Grade Point Converter:

93 to 105 = <b>A</b> = 4.0	90 to 92 = <b>A-</b> = 3.67	87 to 89 = <b>B+</b> = 3.33
77 to 79 = <b>C+</b> = 2.33	73 to 76 = <b>C</b> = 2.0	70 to 72 = <b>C-</b> = 1.67
59 and below = <b>F</b> = 0.0	Note: <i>Grade systems for every professor are unique.</i>	

#### Knowing Your Grades:

**I DO NOT USE THE BRIGHTSPACE GRADE BOOK.** All your grades for this course will be available on a separate link on the Brightspace contents page called “NEW GRADES.” By clicking on the link at the and signing in with a password I will get from you early in the semester, you will be able to see all your grades. Please refer to this page before emailing me with questions about specific grades.

83 to 86 = <b>B</b> = 3.0	80 to 82 = <b>B-</b> = 2.67
68 to 69 = <b>D+</b> = 1.33	60 to 67 = <b>D</b> = 1.0

## Late/Make-up Assignment/Extra Credit Policy

**Exams:** Make-up exams will not be given, unless you make arrangements with me within one week of the exam. If you miss an exam without making arrangements to make it up, you will receive no credit for that particular exam, unless you can demonstrate evidence that an emergency occurred. In the case of bad weather on an exam day, see the course webpage for instructions.

**Bi-weekly Journals:** Late Journal entries will be penalized at a rate of 1 point per week late (no points after 2 weeks late).

**Group Plickers Quizzes:** Plickers quizzes can be made up within one week after the quiz is given in class.

**Online Media Homework:** Online media video responses submitted after the due date will receive HALF-CREDIT if turned in within five weeks of it being assigned. Inability to access Brightspace to complete the activity is not a valid excuse for missing an assignment. Be prepared to complete the activity prior to the due date.

**Research Paper Assignments:** Research assignments turned in late will be penalized 10% of the grade for every week late. Assignments will earn no credit after five weeks late.

**Extra credit:** I do not give extra credit assignments to individuals – any extra credit will be on a class-wide basis (and there is no guarantee of ANY extra credit assignments in any given semester).

## Class Policies:

- **ATTENDANCE:** Students should make every attempt to attend all classes. Missing any more than **two classes** impedes your work and may result in a lower grade. Attendance is taken daily and recorded.

**The Fine Print:** The absences allowed are for (college-sponsored) athletic events, sickness (a serious injury requiring hospitalization or contagious illness, for example), family emergencies (death or life-threatening predicaments, for example), snow days, car accidents, etc. It is expected that the absences allowed will cover the cases where absence is necessary. If they do not, please meet with me during my office hours to explain your case. If you have more than the allowed number of absences and would like to have your case considered, please provide documentation of the reason for your absences beyond the first three, including date, evidence, and explanation of the absence, *in writing* (not by e-mail or verbal agreement). As an incentive for good attendance, for each of the absences you are allowed that go unused, you will earn an extra bonus point toward the final grade. Also, if you attend each class before and after the mid-semester break, one point will be added to your attendance score.

- **LATE ATTENDANCE Policy:** Arriving late disrupts the class, as does leaving early – anyone showing up more than **15 minutes** after the start of class or leaving the classroom during class (with the exception of emergencies only) will be marked absent. Every **three instances of lateness** prior to the 15-minute deadline **will translate into an absence**.

- **Classroom NORMS:** You are attending class in a college classroom designed specifically to help you seek knowledge. *Being distracted by your cell phone, playing games, texting, calls from friends or family, eating, sleeping, reading outside material, working on other classes' assignments, using a laptop computer outside of class purposes, etc.,* are examples of **unacceptable** classroom behavior.

**The Fine Print:** Talking in class is ok – however, it should be public, relate directly to the class conversation, should take the form of civilized argument or a relevant question, and should never preempt another speaker (one speaker at a time, please). RESPECT for the space of the classroom (this includes professor and fellow students) and the exercise of SELF-CONTROL is expected from ALL STUDENTS. If the norms of respect are not being observed (usually defined when you disturb the students around you) Professor Reymers reserves the right to take disciplinary action(s) against the offender(s), including but not limited to affecting your grade and asking you to leave the classroom. In general, attendance of college classes is directly correlated to the grades that students receive, despite that it may not be noticeably or regularly enforced. If you want a high grade, come to class and recognize these guidelines.

- **Plagiarism Rule:** Academic honesty promotes continued academic and occupational success. Maintenance of academic honesty and quality education is the responsibility of both faculty and students. Any written assignment (including all electronic media) submitted by a student must be **original authorship**. Representation of another's work as his or her own shall constitute plagiarism. See the student handbook for more information.

**The Fine Print:** Plagiarism means theft of intellectual property, obtained from a print or electronic medium. A person has plagiarized if s/he quotes three or more words in sequence from a source and (1) doesn't use quotation marks ("The quick brown fox..."), or (2) doesn't identify the source (what is known as "citation"). A person has also plagiarized if s/he records or cites ideas, information, or other material from a source that is not identified, or if the individual paraphrases information from a source that is not acknowledged. The penalty for plagiarism could be failure on the assignment, failure in the course, or even expulsion from the college. *Ignorance of these rules is not an excuse for plagiarism.*

- **IMPORTANT RULES ABOUT COPYING and AI:** In an online setting, it's tempting to "work together" with one or more other students to answer questions and complete assignments and exams. Please know that I have a keen eye and memory, and I have comparison software that can scan your assignment and compare the wording to other students'. If there is an exact match, both/all students involved will fail the assignment (in the case of a first infraction).

**The Fine Print:** In the case of exams and quizzes, if answers to all questions match exactly or statistically too close to another student(s), both/all students involved will face a penalty. For my AI policy this semester, see the Brightspace page; generally, the same rules apply as above (exact copies from AI, as established by AI checkers, will be penalized, but using AI for ideas and grammar (such as Grammarly) is generally okay.

## ***Starfish***

This course participates in the Starfish Early Alert System, an early intervention system designed to enable academic success, student persistence, and graduation. When an instructor observes student behaviors or concerns that may impede academic success, the instructor may raise an alert flag that 1) notifies the student of the concern, 2) requests an individual contact to discuss the issue, and 3) in most cases, also refers the student to the academic advisor. If you receive an email notification of an early alert, it is your responsibility to contact the instructor as soon as possible to discuss the issue. The purpose of the contact is to determine the severity of the issue, accurately assess its potential impact on your academic success, and to plan actions to prevent negative consequences and enable academic success. For more information about the Early Alert system, contact your academic advisor.

## ***Academic Assistance***

The Tutoring Center is a resource available to all students who would like assistance with their courses. Both peer and professional tutors are available Sundays through Fridays by appointment or on a drop-in basis. Help is provided for most subjects taught at the College. The Tutoring Center also provides online tutoring for about ten subjects through NightOWL, which occurs 7:00 PM to midnight Sundays through Thursdays. In addition to assisting students with course content, the Tutoring Center staff can assist students with general study skills such as note-taking, test-taking, time management, and critical thinking. The Tutoring Center also organizes Student Success Seminars, workshops exploring these and other topics that are useful regardless of one's courses or major. The Tutoring Center is located in the back left corner on the first floor of Butcher Library. For additional information, please visit the Tutoring Center's webpages at <https://www.morrisville.edu/contact/offices/tutoring-center> and/or email Stephanie Lawhorne, Director of the Tutoring Center, at [LawhorSL@morrisville.edu](mailto:LawhorSL@morrisville.edu).

## ***Counseling Support***

Successful academic performance is a mutual goal between students and the SUNY Morrisville community. Many problems may arise during your time here that could interfere with your academic course work. Things such as significant stress, mood swings, anxiety, and difficulties concentrating. Problems with strained relationships, drugs/alcohol, family concerns, loss or crisis may also contribute to decreased academic performance. Counseling services are available to assist you in addressing these and other concerns you may be experiencing. Services are free and confidential for all enrolled students through the Student Health Center. You can call **315.684.6078** to schedule an appointment or visit [health center](#) to find out more about counseling services.

## ***Students in need of accommodations***

Any student who feels they may need an accommodation based on the impact of a disability should contact the Accessibilities Services Office immediately to register for services. You will meet privately to discuss your specific needs and prepare your accommodation sheets for you to distribute to your instructors. Although you may register for services at any time, please attempt to make arrangements within the first two weeks of the semester so all appropriate academic accommodations can be set. For additional information, contact 315.684.6031.

Morrisville Campus Classes: in the Academic Enrichment Center of the Butcher Library. 315.684.6930

Norwich Campus Classes: 607.334.5144 in the Student Services Office at the Norwich Campus.

## ***Title IX Protections***

Title IX of the Education Amendments of 1972 (20 U.S.C. § 1681) is an all-encompassing federal law that prohibits discrimination on the basis of sex in education programs and activities receiving federal financial assistance. Although Title IX is often associated with equal opportunity in athletics programs, the law is much broader and includes discrimination on the basis of gender, sexual harassment and sexual assault. Questions or concerns regarding Title IX should be directed to SUNY Morrisville's Title IX Coordinator at 315.684.6981 or for Norwich 607.547.1072. Students should also familiarize themselves with the Student's Bill of Rights located in the student handbook (pg. 43), which outlines students' rights related to the reporting of incidents under Title IX. The official policy can be found online at the [Title IX page](#).

## Part 1: Society and the Mind/Body

### *The Bio-Psycho-Social Perspective*

#### I. Defining and Regulating Drugs (Social Stuff)

##### **Week 1. Jan 22-28: Introduction to Drugs**

Acquire textbook (*DSHB\**) and biography (*HP\*\**);  
read *DSHB Chapter 1, HP Author's Note and Prologue (p. xi - 8)*

##### **Week 2. Jan 29-Feb 4: Drugs & Society: History & Norms**

Read *DSHB Chapter 2 & HP Chapter 1,2 (p. 9 -41)*  
Do Online Media 1 by end of Sunday  
*Biweekly Journal due by end of Sunday*

##### **Week 3. Feb 5-11: Drug Policy: Government and Law**

Read *DSHB Chapter 3 & HP Chapter 3,4 (p. 42-82)*  
Do Online Media 2 by end of Sunday  
*SOCI 370: Research Paper 1 due end of Sunday*

#### II. Psychopharmacology (How Drugs Work)

##### **Week 4. Feb 12-18: The Central Nervous System**

Read *DSHB Chapter 4 & HP Chapter 5 (p. 83-101)*  
Do Online Media 3 by end of Sunday  
*Biweekly Journal due by end of Sunday*

##### **Week 5. Feb 19-25: The Actions of Drugs**

Read *DSHB Chapter 5 & HP Chapter 6 (p. 102-124)*  
Do Online Media 4 by end of Sunday

##### **Week 6. Feb 26-Mar 3: Substance Use Disorders**

Read *DSHB Chapter 18 & HP Chap 7 (p.125-142)*  
Do Online Media 5 by end of Sunday  
*Biweekly Journal due by end of Sunday*  
*SOCI 370: Research Paper 2 due end of Sunday*

##### **Week 7. Mar 4-10: Midterm Week**

#### **Mar 6: \*\*Midterm Exam**

~ SPRING BREAK MARCH 11-15 ~

\* *DSHB* stands for the textbook name, “Drugs, Society and Human Behavior” (17<sup>th</sup> ed)

\*\**HP* stands for Carl Hart’s biography, titled “High Price...”

## Part 2: The Drugs

#### III. Familiar Drugs

##### **Week 8. Mar 18-24: Stimulants and Caffeine**

Read *DSHB Chaps 6, 11*  
Do Online Media 6 by end of Sunday

##### **Week 9. Mar 25-Mar 31: Depressants and Inhalants**

Read *DSHB Chap 7 & HP Chaps 8,9 (p.143-196)*  
Do Online Media 7 by end of Sunday  
*Biweekly Journal due by end of Sunday*

##### **Week 10. Apr 1-7: Alcohol**

Read *DSHB Chap 9 & HP Chaps 10,11 (p.197-237)*  
Do Online Media 8 by end of Sunday  
*SOCI 370: Research Paper 3 due end of Sunday*

##### **Week 11. Apr 8-14: Tobacco**

Read *DSHB Chap 10 & HP Chaps 12,13 (p.238-276)*  
Do Online Media 9 by end of Sunday  
*Biweekly Journal due by end of Sunday*

#### IV. Restricted Drugs

##### **Week 12. Apr 15-21: Opioids**

Read *DSHB Chap 13 & HP Chaps 14,15 (p.277-312)*  
Do Online Media 10 by end of Sunday

##### **Week 13. Apr 22-28: Marijuana**

Read *DSHB Chaps 14 & HP Chap 16 (p.313-321)*  
*Biweekly Journal due by end of Sunday*  
*SOCI 370: Research Paper 4 due end of Sunday*

##### **Week 14. Apr 29-May 5: Hallucinogens**

Read *DSHB Chaps 15 & HP Chap 17 (p.322-332)*

##### **Week 15. May 4-5: Study for final**

**May 6? (Check schedule)**

**Final Exam** (see schedule message on Brightspace)